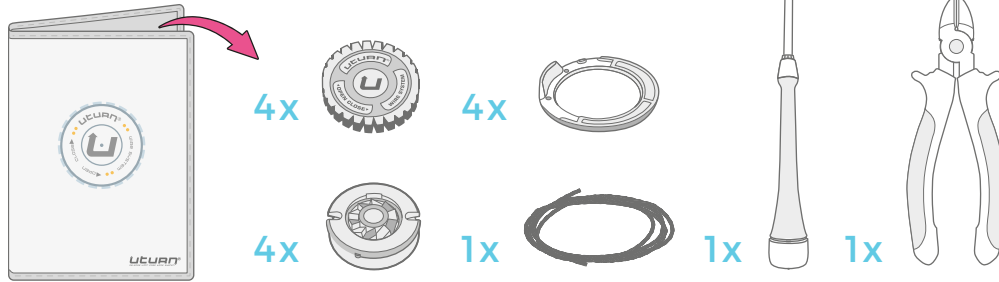
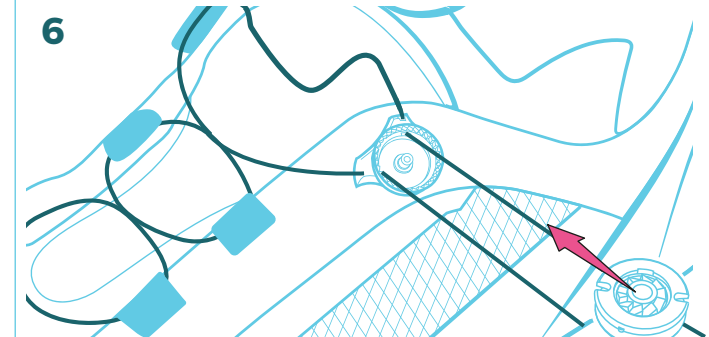
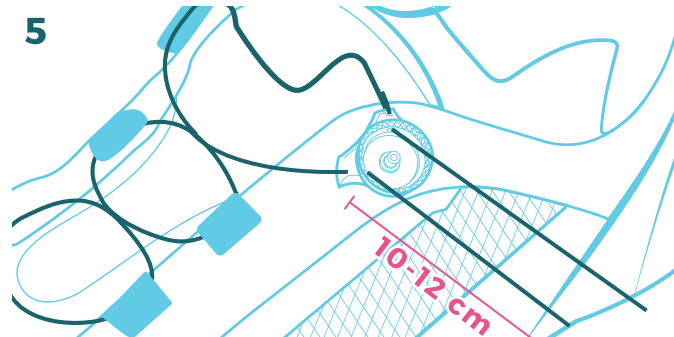
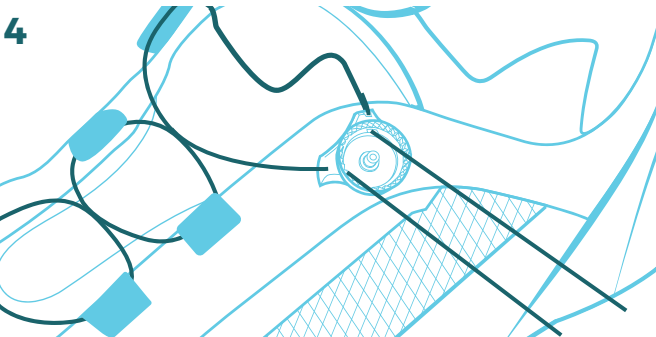
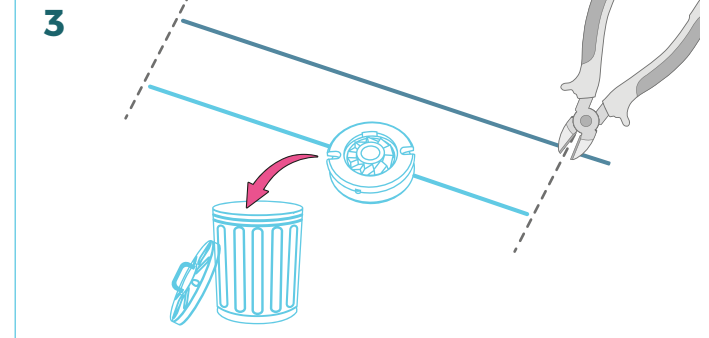
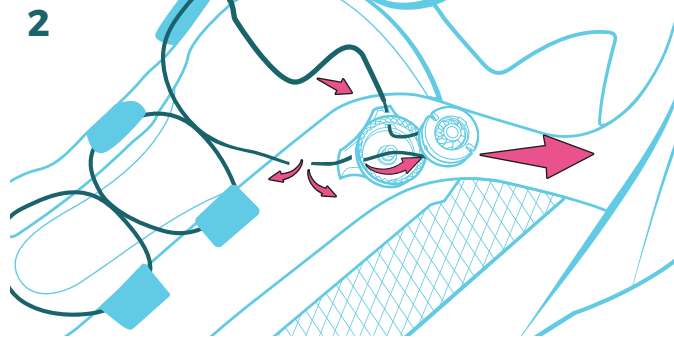
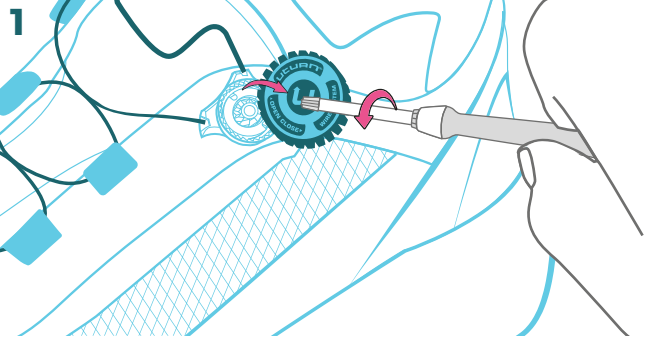
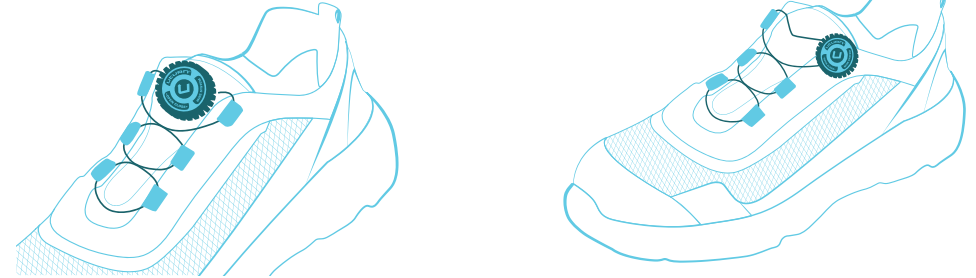


# REPAIR INSTRUCTION

## CONTENTS



## FINISHED LOOK



## 7 How to bind the wire of uturn

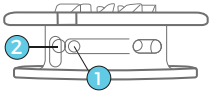
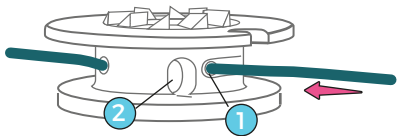
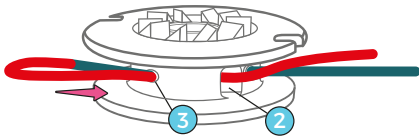


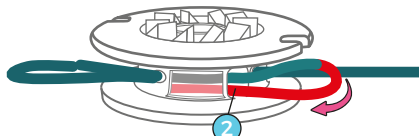
Figure out holes position carefully.



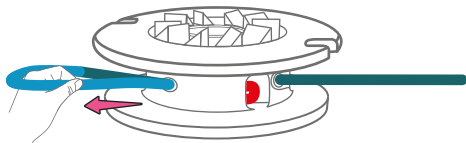
Insert the wire through the hole #1.



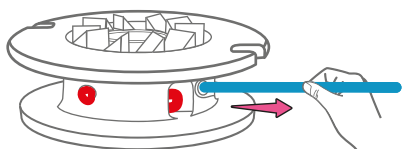
Turn around and insert the wire which comes out of the hole #1, back into the hole #3.



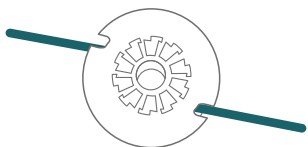
Turn around and insert the wire, which comes out of the hole #2, back into the hole #2.



Pull back the rounded wire (blue) for the knot part (red) to be tightened and fixed in the hole.  
**CAUTION: Don't let the knot part (red) be out of the hole!**

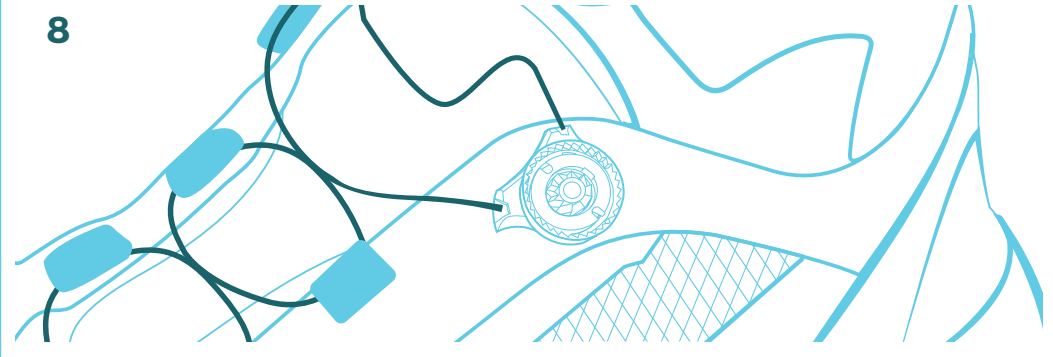


Wire binding is completed by pulling the rest of it (blue)  
**CAUTION: Don't let the knot part (red) be out of the hole!**

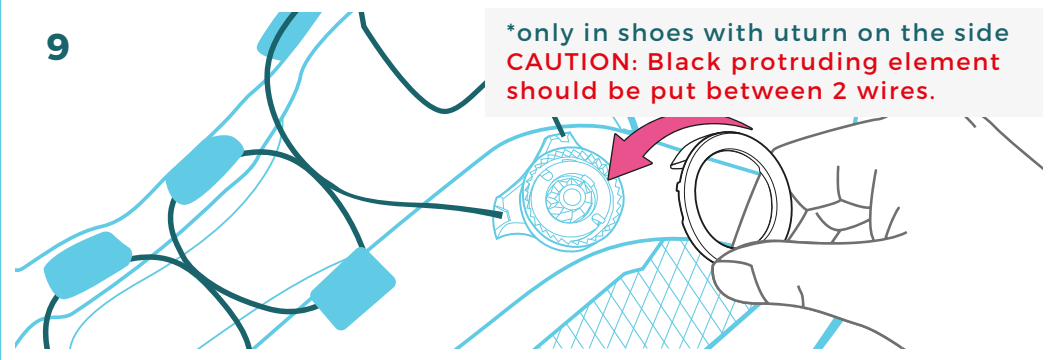


Binding wire of the other side should be inserted symmetrically in the same way.

8



9



10

